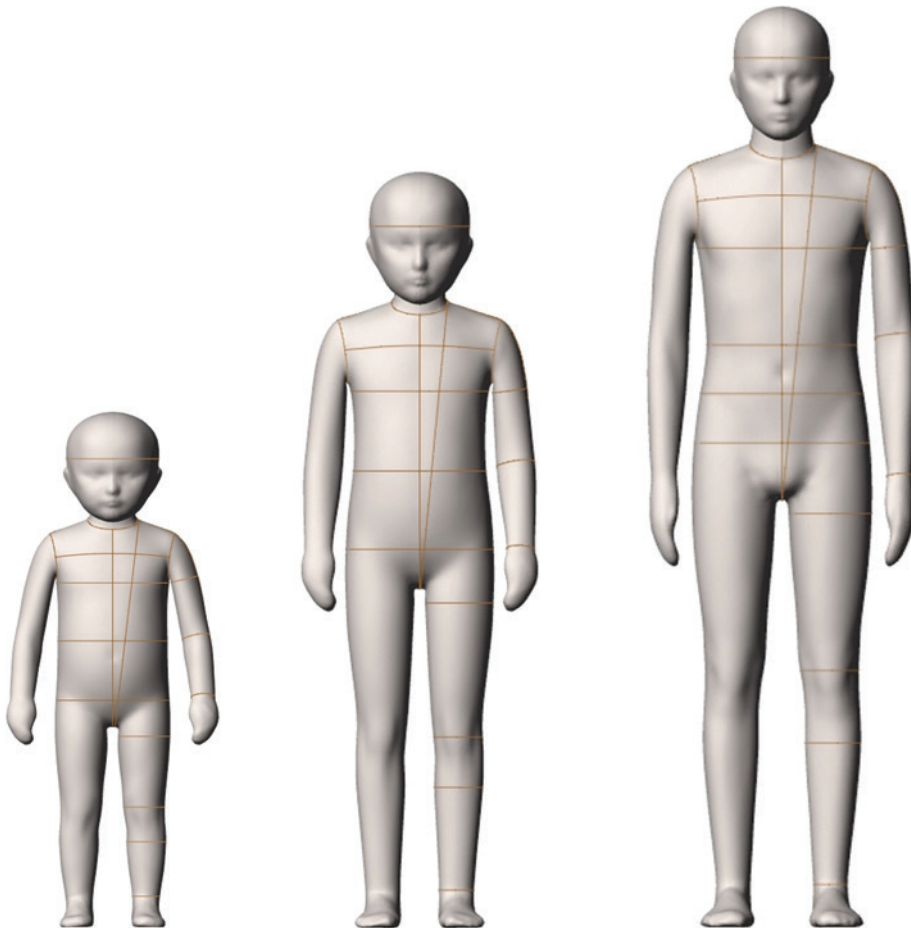


# Alvanon Standard EU | CHILDREN

Infant ( Premie 44 - 24M )  
Toddler ( 3T - 4T )  
Boy/Girl ( 5 - 7 )  
Boy ( 8 - 16 )  
Girl ( 8 - 16 )

# alvaFORM

[ v2.0 ]



Based on thousands of body scans, our regionally based standard AlvaForm series accurately and realistically represent a vast range of target demographics. Each standard form series have been developed in relation to each other as a size range so that the customer can choose the form that is closest to their requirements whether as a base sample size or jump size for garment evaluation. This option is equally popular among global and region specific brands of various sizes and industries.

For additional information and pricing details, contact one of our global offices listed below:

**United States**  
Alvanon, Inc.  
212.868.4318  
us.sales@alvanon.com

**Hong Kong**  
Alvanon HK, Ltd.  
852.2423.6786  
hk.sales@alvanon.com

**London**  
Alvanon UK, Ltd.  
44 (0) 207.792.5977  
uk.sales@alvanon.com

**Germany**  
Alvanon Deutschland GmbH  
49 (0) 521.560.560.9.0  
de.sales@alvanon.com

alvanon.com

## STYLE:

- Full Form
- Half Form
- Slack Form

## MAKE:

- Fiberglass Form
- Tailor Form
- Soft Form

- = Fiberglass Make
- = Soft Make

## AVAILABILITY:

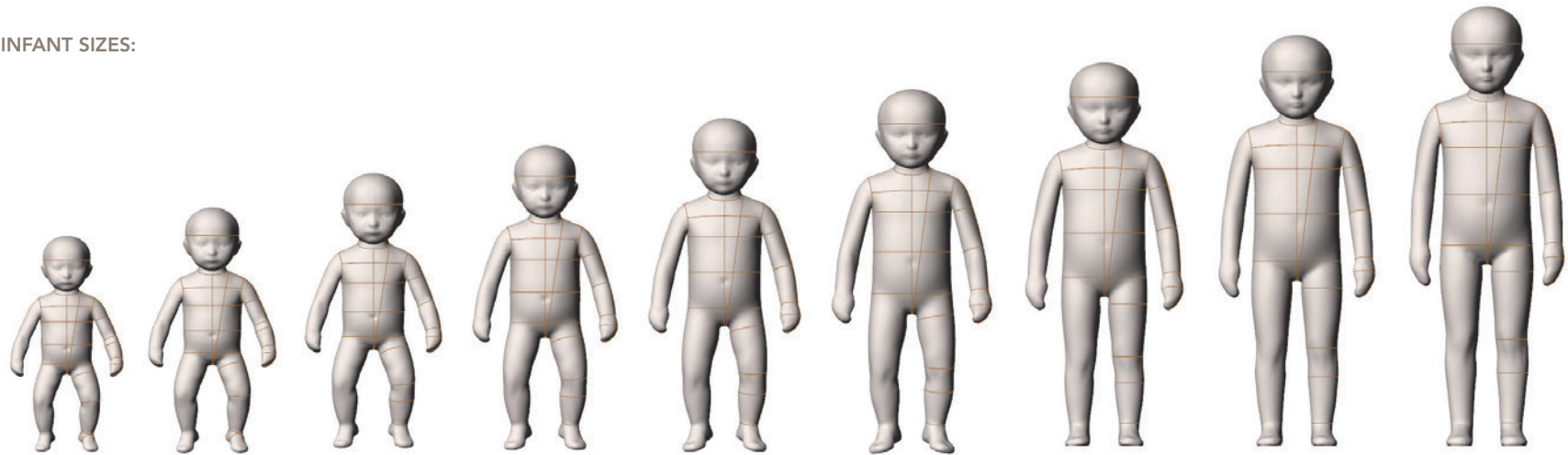
Alvanon Standard EU										
▶ INFANT – Bent Leg*	EU	P44*	P50*	NB*	3M*	6M*	9M*	12M	18M	24M
▶ TODDLER	EU	3T	4T							
▶ BOY/GIRL	EU	5	6	7						
▶ BOY	EU	8	10	12	14	16				
▶ GIRL	EU	8	10	12	14	16				

## FEATURES:

STANDARD FEATURES	FULL	HALF	SLACK	*SPECIAL NOTES
Collapsible Shoulders	•			*Children Size 8 & Up
Collapsible Right Hip	•			*Children Size 8 & Up
Detachable Arms	• •			
Detachable Shoulder Caps	• •			
Soft Belly	•			
Detachable Left Leg	•			*Children Size 8 & Up
Measurement Lines	• •			
Form Stand	• •			
Detachable Head & Twist Lock Pole	• •			
Attached Hands	• •			
Attached Feet	• •			*Infant Only
Detachable Feet	• •			*Toddler & Up
ACCESSORIES				
Standing Pegs	• •			*Infant 12M & Up
Body Stocking	• •			
Head Stand	• •			
Table Top Stand	• •			*Infant 12M - Size 4 with Straight Legs
Full Form Stand	• •			

FRONT VIEW

INFANT SIZES:



Pree 44

Pree 50

Newborn

3M

6M

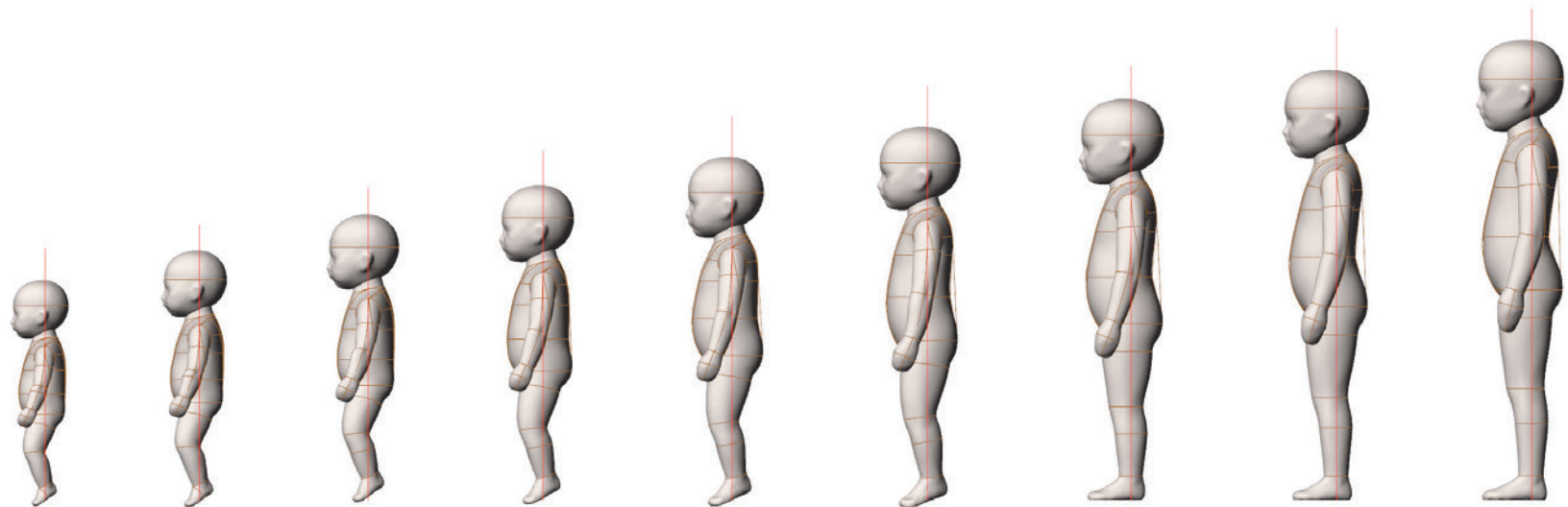
9M

12M

18M

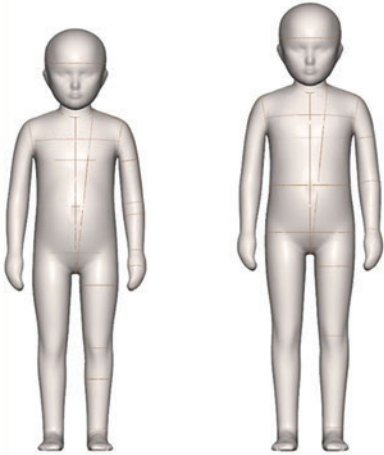
24M

SIDE VIEW



FRONT VIEW

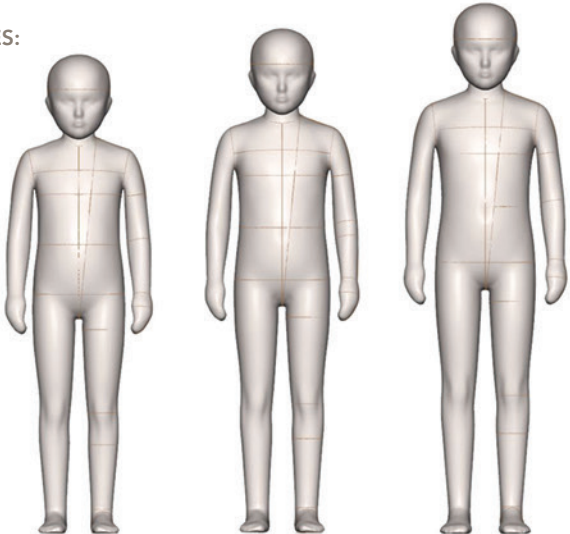
TODDLER SIZES:



3T

4T

BOY/GIRL SIZES:

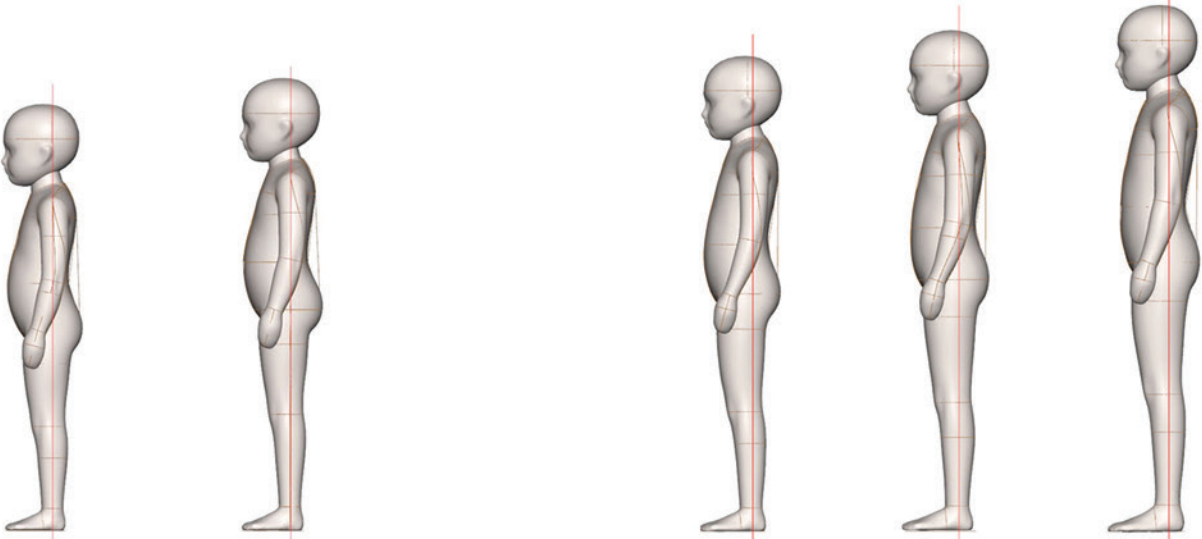


5

6

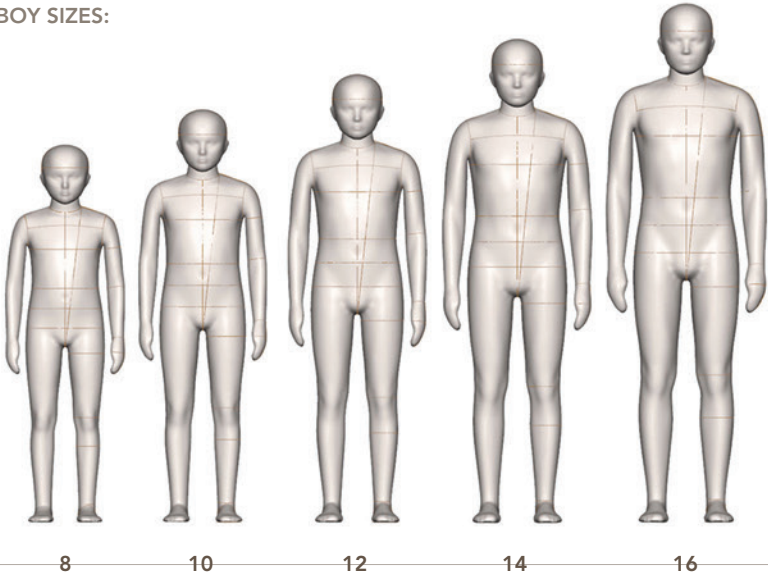
7

SIDE VIEW

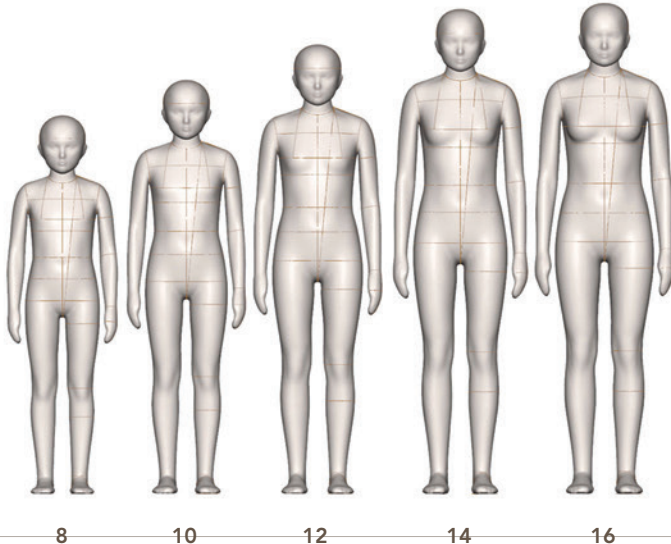


FRONT VIEW

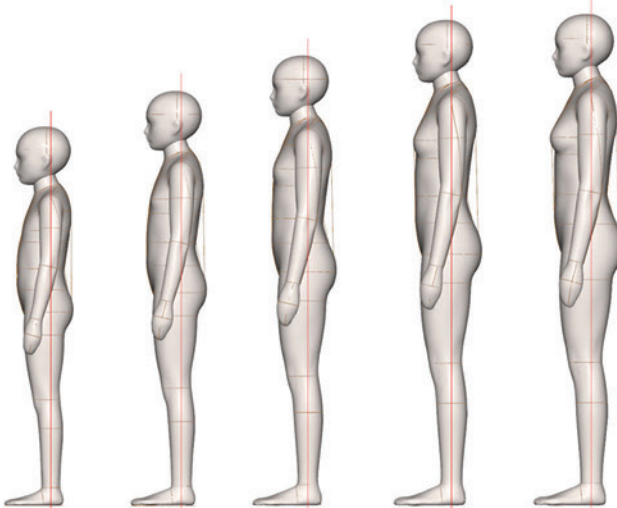
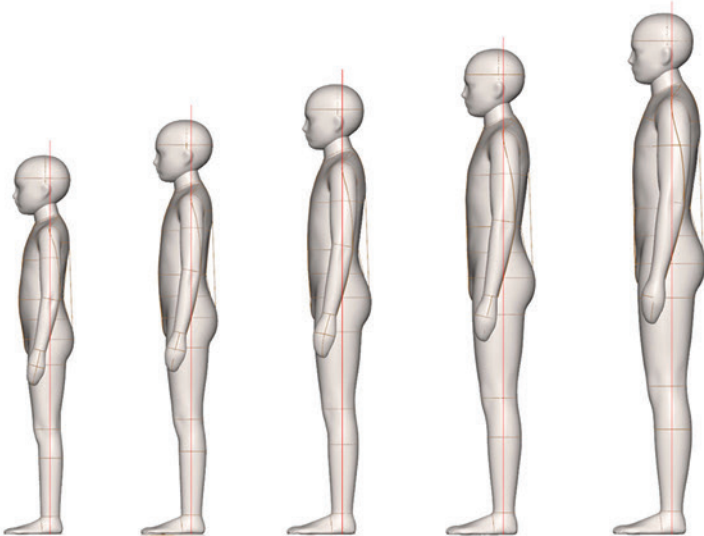
BOY SIZES:



GIRL SIZES:



SIDE VIEW



Size Category	Infant		Infant		Infant		Infant		Infant		Infant		Infant		Infant		Infant	
Size Range	Premie 44		Premie 50		NewBorn		3M		6M		9M		12M		18M		24M	
Neck Base	6 3/4	17.25	7 5/8	19.5	8 3/8	21.25	8 5/8	22	8 7/8	22.5	9 1/4	23.5	9 1/2	24	9 5/8	24.5	9 7/8	25
Across Shoulder	5 3/8	13.75	6 1/4	15.75	6 3/4	17	7 1/8	18.25	7 5/8	19.25	8 1/8	20.5	8 1/2	21.5	8 7/8	22.5	9 3/8	23.75
Chest	12 1/2	31.75	14 1/8	36	15 1/8	38.5	16 7/8	43	17 7/8	45.5	18 1/2	47	19 1/2	49.5	20	50.75	20 5/8	52.5
Bust	n/a	n/a	n/a	n/a	n/a	n/a	n/a	n/a	n/a	n/a	n/a	n/a	n/a	n/a	n/a	n/a	n/a	n/a
HPS to Apex	n/a	n/a	n/a	n/a	n/a	n/a	n/a	n/a	n/a	n/a	n/a	n/a	n/a	n/a	n/a	n/a	n/a	n/a
Waist	12 1/2	31.75	14 1/8	36	15 1/4	38.75	16 7/8	43	17 3/4	45	18 1/4	46.5	19 1/4	48.75	19 5/8	49.75	19 7/8	50.5
CF Neck to Waist	4 1/4	10.75	4 3/4	12.25	5 3/8	13.5	5 7/8	14.75	6 1/8	15.75	6 5/8	16.75	7 1/8	18	7 1/2	19.25	7 7/8	20.25
CB Neck to Waist	4 5/8	11.75	5 1/4	13.5	5 7/8	15	6 3/8	16.25	6 3/4	17.25	7 1/4	18.5	7 7/8	20	8 3/8	21.25	8 7/8	22.5
High Hip	n/a	n/a	n/a	n/a	n/a	n/a	n/a	n/a	n/a	n/a	n/a	n/a	n/a	n/a	n/a	n/a	n/a	n/a
Low Hip	11 7/8	30	13 3/8	34	14 5/8	37	16 1/2	42	17 5/8	44.75	18 3/4	47.5	19 5/8	50	20 1/4	51.5	20 7/8	53
Inseam	5 7/8	15	6 3/4	17	7 5/8	19.25	8 5/8	21.75	9 1/2	24.25	10 5/8	27	12 1/4	31.25	13 5/8	34.5	15	38
Total Rise	6 7/8	17.5	7 7/8	20	8 3/4	22	10 3/8	26.25	12	30.25	13 1/4	33.75	13 3/4	35	14 1/4	36.25	14 7/8	37.75
Thigh	6 3/4	17	7 5/8	19.25	8 1/4	21	9 1/8	23.25	10	25.25	10 7/8	27.5	11 1/4	28.75	11 3/4	30	12 1/4	31
CB Neck to Wrist	8 5/8	22	9 3/4	25	10 3/4	27.5	12	30.5	13 1/8	33.25	14 1/4	36.25	15 1/8	38.5	16 1/8	41	17 1/8	43.5
Bicep	4 1/8	10.5	4 5/8	11.75	5	12.75	5 3/8	13.75	5 3/4	14.75	6 1/8	15.5	6 1/4	16	6 1/2	16.5	6 5/8	17
Total Height	17 3/8	44	19 5/8	50	22	56	24 1/2	62	26 3/4	68	29 1/4	74.25	31 5/8	80.25	33 7/8	86	36 1/4	92
Head	13	33	14 3/4	37.5	16 3/8	41.5	16 7/8	43	17 3/4	45	18 7/8	48	19 1/4	49	19 3/4	50	19 7/8	50.5

Size Category	Toddler		Toddler		Boy/Girl		Boy/Girl		Boy/Girl	
Size Range	3T		4T		5		6		7	
Neck Base	10 1/8	25.5	10 1/4	26	10 1/2	26.5	10 7/8	27.5	11 1/4	28.5
Across Shoulder	9 5/8	24.25	9 7/8	25.25	10 1/8	25.75	10 5/8	27	10 7/8	27.75
Chest	21 3/8	54.25	22 1/8	56	22 7/8	58	23 3/4	60.5	24 3/4	63
Bust	n/a	n/a	n/a	n/a	n/a	n/a	n/a	n/a	n/a	n/a
HPS to Apex	n/a	n/a	n/a	n/a	n/a	n/a	n/a	n/a	n/a	n/a
Waist	20 5/8	52.5	21 1/2	54.5	21 5/8	55	22	56	22 1/2	57
CF Neck to Waist	8 1/2	21.5	8 3/4	22.25	9 1/4	23.5	9 3/4	24.75	10 1/8	25.75
CB Neck to Waist	9 3/8	24	9 3/4	24.75	10 3/8	26.25	10 7/8	27.5	11 1/4	28.5
High Hip	n/a	n/a	n/a	n/a	n/a	n/a	n/a	n/a	n/a	n/a
Low Hip	22 1/8	56	23 5/8	60	24 3/8	62	25 1/4	64	26	66
Inseam	16 1/8	41	17 7/8	45.5	19 3/8	49.25	20 1/2	52	22 1/8	56
Total Rise	15 3/4	40	16 3/8	41.5	17	43.25	18	45.5	18 7/8	48
Thigh	12 1/2	31.75	13	33	13 3/8	34	14 1/4	36	15	38
CB Neck to Wrist	17 7/8	45.5	18 1/2	46.75	19 3/8	49.25	20 3/8	51.75	21 1/4	54
Bicep	7 1/4	18.5	7 3/8	18.75	7 1/2	19	7 3/4	19.5	7 3/4	19.75
Total Height	38 5/8	98	40 7/8	104	43 1/4	110	45 5/8	116	48 1/8	122
Head	20 1/8	51	20 3/8	52	20 5/8	52.5	20 7/8	53	21 1/8	53.5

Size Category	Boy		Boy		Boy		Boy		Boy		Girl		Girl		Girl		Girl		Girl	
Size Range	8		10		12		14		16		8		10		12		14		16	
Neck Base	11 5/8	29.75	12 1/8	31	13	33	13 5/8	34.5	14 5/8	37	11 3/4	29.75	12 1/8	30.75	12 3/4	32.25	13	33	13 3/8	34
Across Shoulder	11 3/8	29	12 1/8	30.75	13 1/8	33.5	14 1/8	35.75	15 1/8	38.25	11	28	12	30.5	13	33	13 3/4	34.75	13 7/8	35.25
Chest	25 1/4	64	28	71	30 3/4	78	33 7/8	86	36	91.5	n/a	n/a	n/a	n/a	n/a	n/a	n/a	n/a	n/a	n/a
Bust	n/a	n/a	n/a	n/a	n/a	n/a	n/a	n/a	n/a	n/a	25 5/8	65	28 1/8	71.5	30 3/4	78	32 1/2	82.5	34 1/4	87
HPS to Apex	n/a	n/a	n/a	n/a	n/a	n/a	n/a	n/a	n/a	n/a	7 1/4	18.25	7 3/4	19.5	8 1/2	21.5	9 1/4	23.5	9 5/8	24.5
Waist	23 1/4	59	25	63.5	26 3/4	68	28 3/4	73	30	76.25	22 7/8	58	24 1/4	61.75	25 3/4	65.5	26 1/2	67.25	27 1/8	69
CF Neck to Waist	10 1/2	26.75	11 1/2	29.25	12 3/8	31.5	13 5/8	34.75	15 3/8	39	10 1/4	26	11 3/8	28.75	12 5/8	32.25	14 3/8	36.5	14 5/8	37.25
CB Neck to Waist	11 5/8	29.75	12 7/8	32.75	14	35.75	15 1/2	39.5	17 1/2	44.5	11 3/4	29.75	12 7/8	32.5	14 1/4	36	15 7/8	40.25	16 1/4	41.25
High Hip	25 3/8	64.5	27 1/8	68.75	29	73.5	31 1/2	80	33 3/8	84.75	25 5/8	65	27 5/8	70.25	30	76.25	31 1/8	79	33 1/4	84.5
Low Hip	26 3/4	68	29 1/4	74.25	31 7/8	81	35 1/8	89	37	94	27 5/8	70	30 3/8	77	33 1/8	84	34 5/8	88	36 1/4	92
Inseam	23 3/8	59.25	25 5/8	65	27 3/4	70.5	30	76.25	32 1/4	82	23 1/2	59.75	25 7/8	65.75	28 1/8	71.5	30 1/2	77.5	30 7/8	78.5
Total Rise	20 1/4	51.5	22 7/8	58	25 5/8	65	27 5/8	70.25	28 1/2	72.5	19 7/8	50.75	22 1/2	57.25	24 1/2	62.25	25 5/8	65.25	25 3/4	65.5
Thigh	15 3/8	39	16 7/8	43	18 1/2	47	20 1/8	51	21 5/8	55	15 3/4	40	17 1/2	44.5	19 1/8	48.5	19 7/8	50.5	20 3/4	52.75
CB Neck to Wrist	23 1/4	59.25	25 5/8	65	28	71	30 3/8	77	32 3/4	83.25	23	58.5	25 1/2	64.75	28	71.25	30 3/8	77.25	30 3/4	78
Bicep	7 7/8	20	8 3/8	21.25	9 5/8	24.5	10 3/4	27.25	11 3/4	30	8 1/4	21	9	22.75	9 5/8	24.5	10	25.5	10 3/8	26.5
Total Height	50 3/8	128	55 1/8	140	59 7/8	152	64 5/8	164	69 1/4	176	50 3/8	128	55 1/8	140	59 7/8	152	64 5/8	164	65 3/8	166
Head	21 1/4	54	21 3/4	55.5	22 1/2	57	23	58.5	23 5/8	60	21 1/4	54	21 5/8	55	22	56	22 3/8	57	22 7/8	58